

# Cassette Roller Blinds

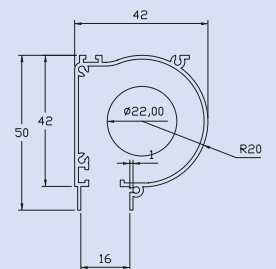
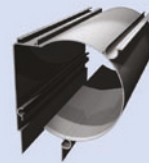




# The Cassette Series

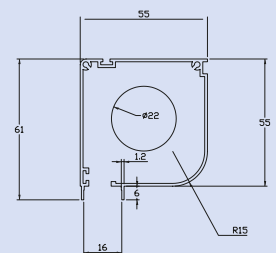
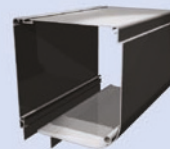
## Cassette System 40

Perfect for smaller windows and door panels. The System 40 is a simple, robust and efficient cassette roller blind. Designed and constructed with a one piece extruded cassette. Operated by or bead chain.



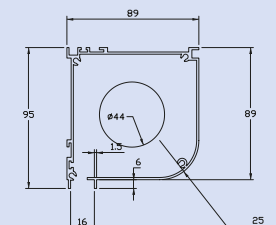
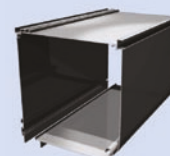
## Cassette System 55

A one piece extruded cassette box, which can be specified with bead chain or manual gearbox operation.



## Cassette System 90

The right roller blinds for larger windows. One piece extruded cassette offers exceptional strength across larger windows, or in awkward configurations. The methods of operation available are either manual gearbox or electric tubular motor.



# Methods of Operation

## **Bead Chain Unit:**

### **System 40 and System 55**

A unique bead chain guide can permit operation through the window frame.

## **Gear Unit:**

### **System 55 and System 90**

This positively geared system allows larger blinds to be easily adjusted.

## **Electric operation (mains operated):**

### **System 90**

The System 90 can be used in conjunction with Somfy motors and accessories.

Options include:

Hard-wired Electrical Switch

RTS Switch

RTS Remote

Control Units

## **System 100**

Cassette roof blinds are available up to a maximum width 120cm and a drop of 150cm. Further sizes are available by request. This system is available on a motorised or gear operated system and can be fitted to any degree of inclination. Rods are welded into fabric to provide support and prevent sagging.

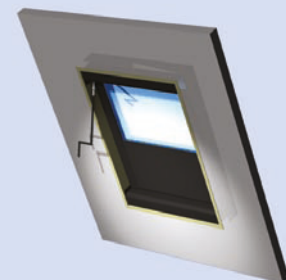
Quotes and lead times are available on request.



System 55



System 55 & 90



System 100

# Innovative Technology & Control Systems

## Innovative Technology

Designed with a one piece extruded aluminium cassette box to give a neat, modern appearance and incorporating two part adjustable side guides to provide blackout conditions for environments such as schools, offices and hospitals.

## Side Guides

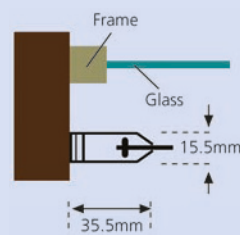
Two part telescope Side Guides:

- For easy adjustment to provide smooth operation within the reveal.
- Available in face fix and side fix option to allow for easy installation.

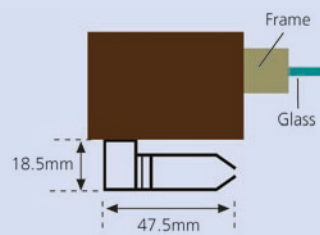
## Bottom Rail

Double aluminium profile with brush seal to improve efficiency of light exclusion and sun screening.

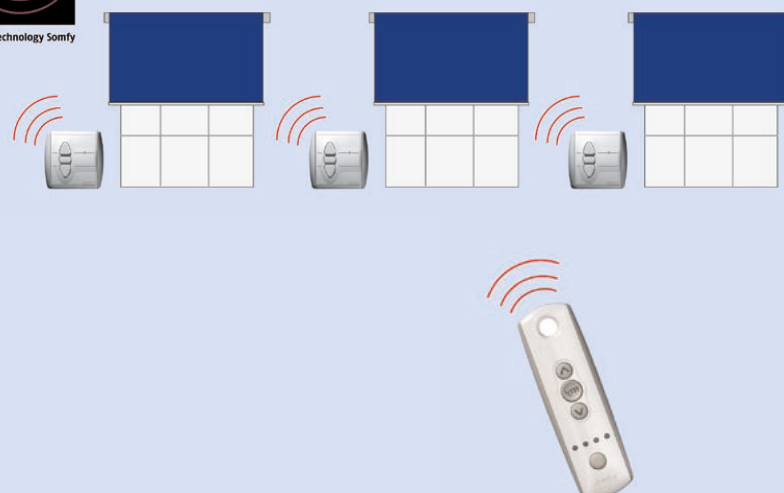
1. Side Fix Side Guide



2. Face Fix Side Guide.



RTS Wireless System



# Size Chart

Aluminium Cassette	Rollers Tube Size	Methods of Operation					
		Bead Chain		Gear Box		Motor	
		Max Width	Max Drop	Max Width	Max Drop	Max Width	Max Drop
System 40	22mm	1600	1350				
System 55	22mm	1600	3500	2000	3500		
System 90	44mm			3000	3500	3000	3500
System 100*	44mm			1200	1500	1200	1500

\* Further sizes are available by request

**Maximum sizes are calculated using Unilux fabric. For alternative fabric maximum sizes please contact Customer Services.**

**Maximum sizes are calculated without fabric buttons. When added, these will reduce the maximum drop. For further details please contact Customer Services.**

System 40, 55 and 90 blinds can be fitted on an inclination of 35 degrees from the vertical.  
System 100 blinds can be fitted with any degree of inclination.

**Fabrics.** A range of fabrics are available for all cassette systems. Blackout blinds are normally specified with Unilux fabric. This is a PVC coated fiberglass laminate which meets BS5867:2008 Part 2 Type B in accordance with BS EN ISO 15025: 2002 Procedure A.

**Sunscreening.** Decora's range of Uniview™ fabrics incorporates a sophisticated open weave that provides significant reductions in solar glare and heat. These fabrics are flame retardant to the highest standards and offer outward visibility along with daytime privacy. They create improved working conditions and at the same time conserve energy.

**Blackout Applications.** It is recommended that colour black profiles are specified for this type of use.

